

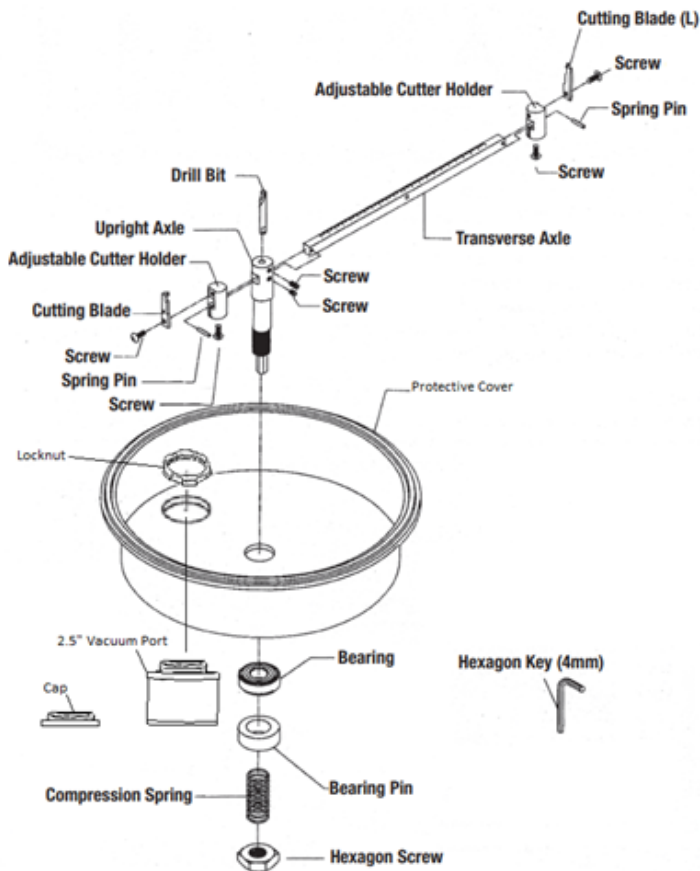


# **AHC-19**

## **ADJUSTABLE HOLE CUTTER**

### **INSTRUCTION MANUAL**

# KNOW YOUR ADJUSTABLE HOLE CUTTER



## HOW TO MEASURE SIZES

Before assembling your AHC-19, you will first need to adjust the diameter of the hole cutter to the hole size you want to cut. To do so, follow these instructions:

1. Loosen the screw on each Adjustable Cutter Holder using the included 4 mm hex key.
2. Move each Holder to the radial size you desire. Both Holders **MUST** be moved to the same position on each side of the Transverse Axle.

**Note:** The ruler on each side of the Transverse Axle starts from the center of the AHC-19.

3. When the Holders are in position, tighten them down using the 4 mm hex key.

# HOLE CUTTER ASSEMBLY INSTRUCTIONS

## VACUUM PORT INSTALLATION

1. If your Vacuum Port is not already installed, place it into the hole on the top side of the Protective Cover.
2. Using the Locknut, secure the Vacuum Port from the inside until it is tight.
3. If you choose not to use the AHC-19 with a vacuum, install the Cap instead.

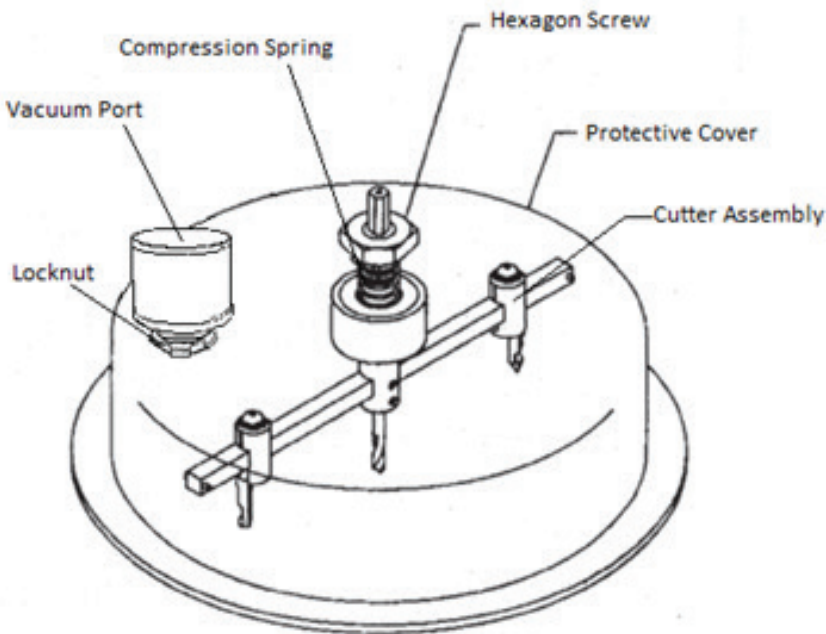
## CUTTER ASSEMBLY INSTALLATION

After the Vacuum Port or Cap is installed, you will need to install the Cutter Assembly into the Protective Cover.

1. Unscrew the Hexagon Screw and remove the Compression Spring from the Cutter Assembly.
2. Insert the Cutter Assembly from the inside of the Protective Cover with the shaft sticking out the middle of the Cover.
3. Put the Compression Screw onto the shaft and tighten it down using the Locknut.

**Note:** You will need to compress the spring while screwing on the Locknut.

4. When done, the completed hole cutter assembly should resemble the illustration above.
5. Complete the installation by attaching the shaft of the AHC-19 to a drill. If you are using a vacuum, you can now attach it to the 2.5" vacuum port as well.



# CUTTING INSTRUCTIONS

Once the cutting diameter is set and the AHC-19 is fully assembled, you are now ready to cut a hole.

1. If you are using a vacuum, turn the vacuum on.
2. Align the drill bit with the center point of the hole to be cut, then slowly start the drill.
3. In cases of ceiling cutting, press the drill slowly upwards depending on the revolution speed of the drill. If you are cutting on the ground, ensure the rear side of the cutting surface is raised off the floor, as to not damage anything underneath it.

**Note:** DO NOT FORCE THE CUTTER BY PRESSING FIRMLY ON IT.

4. After cutting is finished, always disconnect the drill and vacuum from the power supply before removing or adjusting the hole cutter assembly.
5. To prolong the service life of the tool, always operate it carefully, and clean it after each use with a lightly oiled cloth.

## CUTTING INFORMATION

1. Cuts through plywood, plasterboard, acrylic sheets, and silicon sheets up to a maximum depth of 1.1" (27 mm).
2. Minimum Cutting Diameter: 2.2" (55 mm)
3. Maximum Cutting Diameter: 8.6" (218.44 mm)

## WARNINGS

1. The drill, cutting blade, cutter holders and the transverse axle must be fixed tightly and securely with the provided screws before cutting.
2. Both Cutter Holders must be aligned with the same graduation on both left and right sides of the Transverse Axle.
3. If there is any noise or vibration during operation, check whether the screws have loosened.
4. After operation, the Bearing and Upright Axle must be cleaned.