



Magnetic Cable Retrieval System MP-400

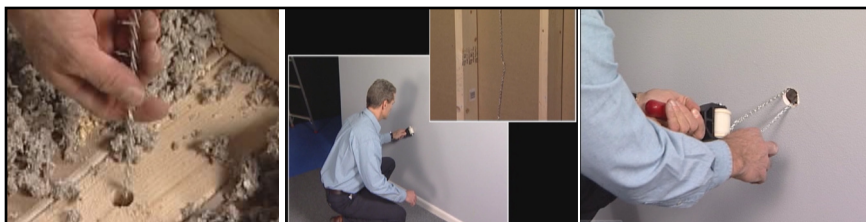


INSTRUCTION MANUAL



TO PERFORM A HOLLOW WALL DROP:

1. Drill a 3/4" hole in the wall header
2. Lower the drop magnet into the wall cavity with a pull line or cable attached
 - The distance the drop magnet is lowered into the wall may vary for different wall heights, but the drop distance height should be minimal to reduce hang ups
 - A small bend in the cable may be applied to suspend the drop magnet
3. Always leave an adequate loop in the cable to accommodate the wall height
 - Note that multiple wall drops may need to be made for larger walls
4. Use the retriever unit to locate the drop magnet suspended in the wall. Slowly move the retriever unit from left to right down the wall
 - When the retriever unit passes over the drop magnet it will become magnetically attached to the wall. This connection verifies the correct wall cavity as well as the drop magnet location
5. After the drop magnet is located, guide the retriever unit to the outlet location. For maximum pull strength, the retriever unit should always be pulled, not pushed
6. When the retriever unit is in the desired location, roll the retriever unit left to right in order to locate the wooden studs prior to cutting the hole for the outlet
7. Drill a 1 1/2" hole to retrieve the drop magnet. Once the hole is complete, guide the retriever unit to the hole and retrieve the drop magnet



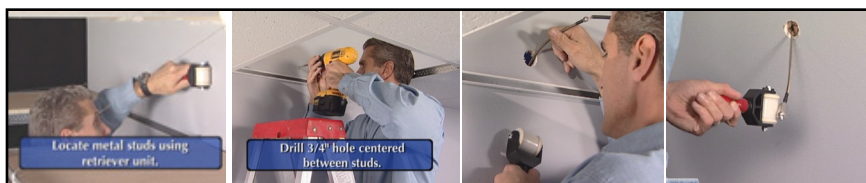
TO PERFORM A JACK CHAIN WALL DROP:

1. Drill a hole that is large enough to accommodate the desired jack chain size
 - Approximately 3/8" in diameter for a #16 jack chain. (Note: The MP-400 comes with a 6 ft jack chain).
2. Lower the jack chain to the floor level inside the wall cavity with a pull line or cable attached
 - A small bend in the cable may be applied to suspend the jack chain
 - Always leave an adequate loop in the cable to accommodate the wall height
3. Use the retriever unit to locate the jack chain suspended in the wall
4. Slowly move the retriever unit left to right at the outlet location listening for the chain to make contact with the sheet rock. The jack chain will magnetically pulled against the sheet rock when the retriever unit passes over it
 - This connection verifies the correct wall cavity as well as the chain location
5. Drill a hole to retrieve the jack chain. When the hole is complete, guide the retriever unit to the hole and retrieve the jack chain
 - You could also position the chain over a small hole and retrieve it with a hook or needle nose pliers



TO PERFORM AN INSULATED WALL DROP:

1. Drill an off-center hole 3/4" in diameter approximately one inch from the edge of the header. This will allow the leader drop magnet to be correctly placed in the insulation
2. When the hole is complete the leader portion of the leader drop magnet should be placed in the hole. When the leader makes contact with the insulation, apply slight pressure and rotate unit it freely drops into the insulation
3. Move the leader up and down in the insulation to create a pocket for the drop magnet. The pocket must be within 1/2" from the back side of the sheet rock for the retriever unit to correctly couple with the drop magnet
4. Once the pocket has been created, attach the cable or pull line and push the leader drop magnet down past the connection point of the leader
 - Always leave an adequate loop in the cable to accommodate the wall height
5. Use the retriever unit to locate the drop magnet suspended in the wall. Slowly move the retriever unit in a left to right motion down the wall. When the retriever unit passes over the drop magnet, it will become magnetically attached to the wall. This connection verifies the correct wall cavity as well as the drop magnet location
 - The retriever unit will suspend itself on the wall once it is connected to the drop magnet
6. After the drop magnet is located, move the retriever unit left to right to correctly couple the leader magnet. The retriever unit is then pulled down the wall to the desired outlet location by using quick 2-inch vertical strokes
 - For maximum pull strength, the retriever unit should always be pulled, not pushed
7. Once satisfied with the outlet location, drill a 1 1/2" hole to retrieve the drop magnet. When the hole is complete, guide the retriever unit to the hole and retrieve the drop magnet



TO PERFORM A STEEL STUD WALL DROP:

1. After removing the ceiling tiles, located the metal studs using the retriever unit
 - The retriever unit is a very effective way of locating metal studs for other applications as well
2. When the studs have been located, drill a hole. The hole should be centered between the studs just above the ceiling tile rail
3. Lower a leader drop magnet into the wall cavity with a pull line or cable attached
 - In metal stud construction it is important to couple the retriever unit as soon as possible to maintain control of the drop magnet
4. After the drop magnet has been coupled, move the retriever unit down the wall to the desired outlet location. Always maintain at least a 1" clearance from the metal studs
5. Once satisfied with the outlet location, drill a 1 1/2" hole to retrieve the drop magnet. When the hole is complete, guide the retriever unit to the hole and retrieve the leader drop magnet
 - This process can also be used for an insulated wall as well



TO INSTALL UNDER CARPET:

1. Separate the carpet from the tack strip and place the drop magnet between the padding and the carpet
2. Attach the retriever unit to the drop magnet through the carpet. Pull up approximately one inch. Then guide the retriever unit to the desired location

